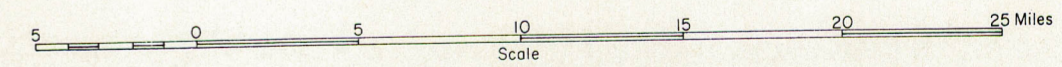


SOUTHERN FIELD GROUP

SEDIMENTARY ROCKS	
QUATERNARY RECENT	Qs Sand dunes
	Qal Alluvium and terrace deposits
PLEISTOCENE	Qm Marine deposits, including Lamita marl, Timm's Point silt, San Pedro sand, and Palos Verdes sand.
	Qc Non-marine deposits, including Saugus formation, alluvial plain deposits, lakebed deposits, and La Habra formation.
PLIOCENE	Pc Non-marine deposits, including Anaverde formation, Ridge Route formation, Peace Valley beds and Hungry Valley formation.
	Pm Marine deposits, including Pico formation & Repetto formation.
TERTIARY MIOCENE	Mc Non-marine deposits including Punchbowl formation, Mint Canyon formation, and Tick Canyon formation.
	Mm Marine deposits, including Santa Margarita formation, Monterey formation, Modelo formation, Puente formation, Topanga formation, and Vaqueros formation.
TERTIARY OLOCENE	Non-marine deposits, including Vasquez series and Sespe formation.
	E Marine deposits, including Tejon formation, Las Lajas formation, Santa Susana formation, and Domingue formation.
PALEO. EOCENE	Ep Marine deposits, including Martinez formation.
CRETACEOUS UPPER	Marine deposits, including Chico formation, and Trabuco formation.
METAMORPHIC ROCKS	
PRE-CRET. (AGE UNKNOWN)	m Undifferentiated metamorphic rocks, including Placerita series and San Gabriel formation; mc-Catalina series; msm-Santa Monica slate; mp-Pelona schist series.
IGNEOUS ROCKS	
VOLCANIC	
TERTIARY OLOCENE	Undifferentiated volcanic rocks, including flows, tuffs, breccias, and intrusive bodies.
OLIGOCENE	Undifferentiated volcanic rocks, principally tuffs and breccias.
GRANITIC	
PRE-TERTIARY (AGE UNKNOWN)	gr Undifferentiated granitic rocks.
	S Serpentine (on Santa Catalina Island only)
	an Anorthosite and related gabbroic rocks.

GEOLOGIC MAP OF LOS ANGELES COUNTY



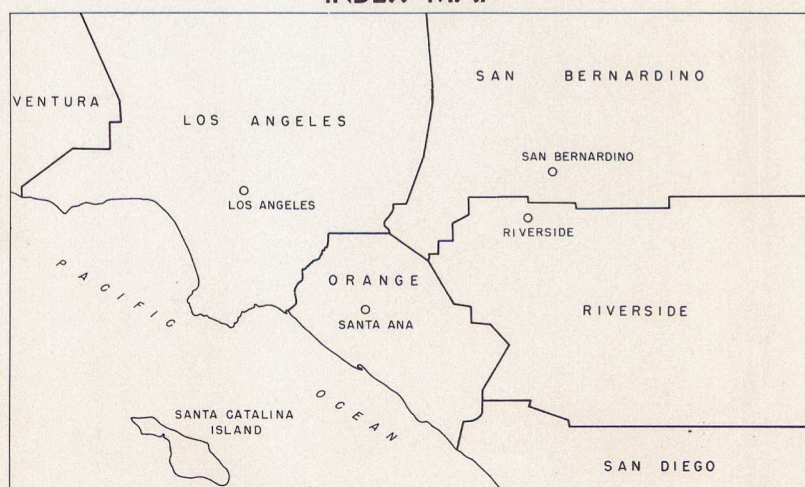
Geology adapted from Geologic Map of California, scale 1:250,000 (in preparation) by Olaf P. Jenkins and Charles J. Kundert. Base map adapted from Army Map Service series V502, sheets NI 11-4, 11-7, and 11-8, scale 1:250,000, 1949.



HAL SHELTON - ARTIST

JEFFERSON MAP CO. DENVER, COLO. U.S.A.
ALL RIGHTS RESERVED. PRINTED IN U.S.A.

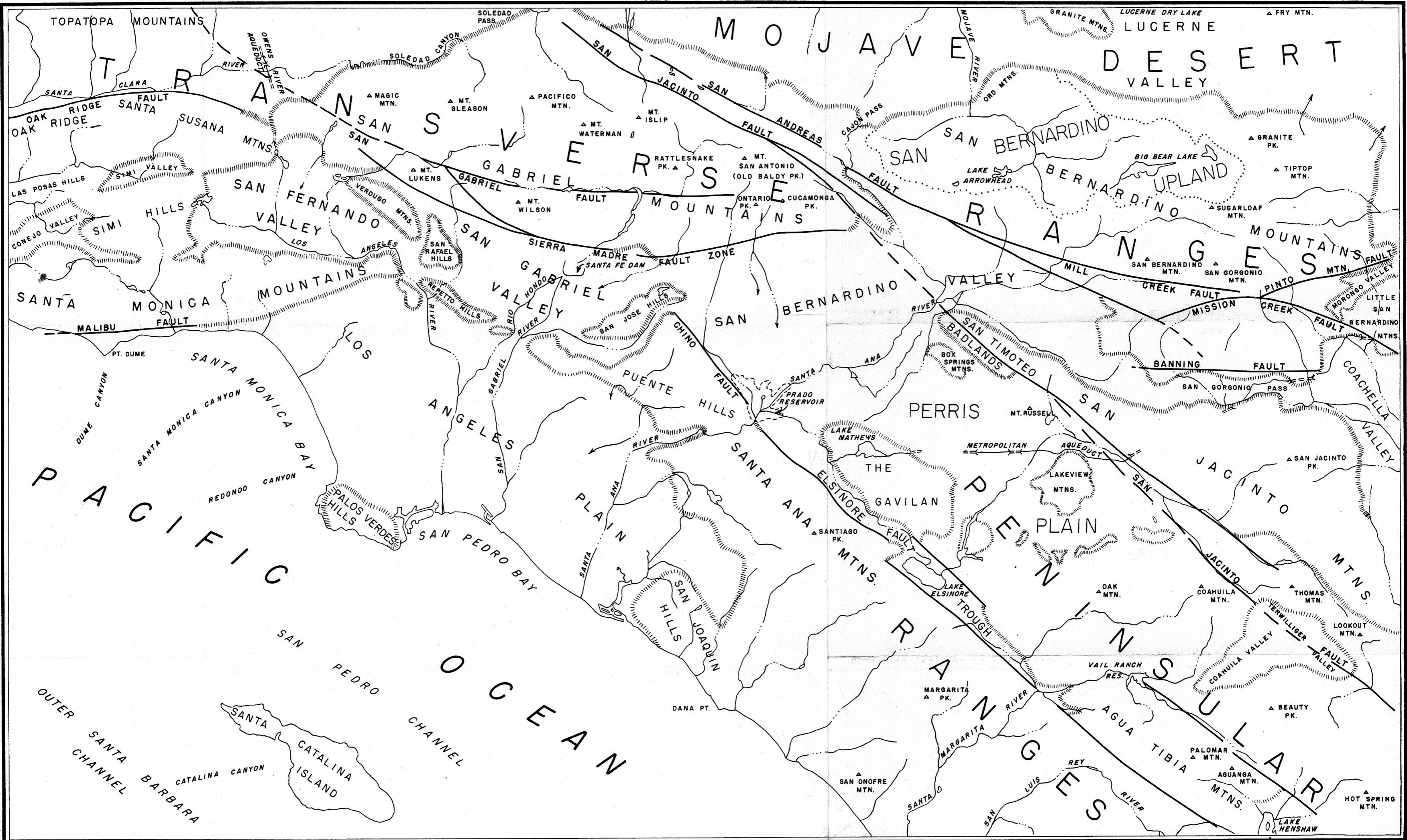
INDEX MAP



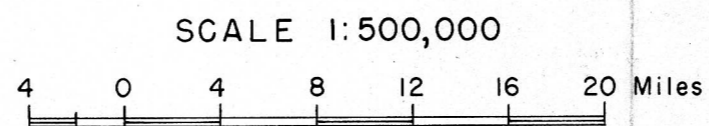
LOS ANGELES AREA OF CALIFORNIA

Accompanying California Journal of Mines and Geology, July 1954

SOUTHERN FIELD GROUP



EXPLANATORY MAP TO ACCOMPANY SHADED RELIEF MAP, LOS ANGELES AREA OF CALIFORNIA



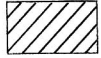


Indicating names of surface features and major faults that have topographic expression visible on the shaded relief map.

DIVISION OF MINES
OLAF P. JENKINS, CHIEF

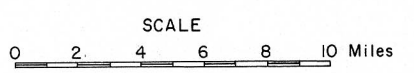
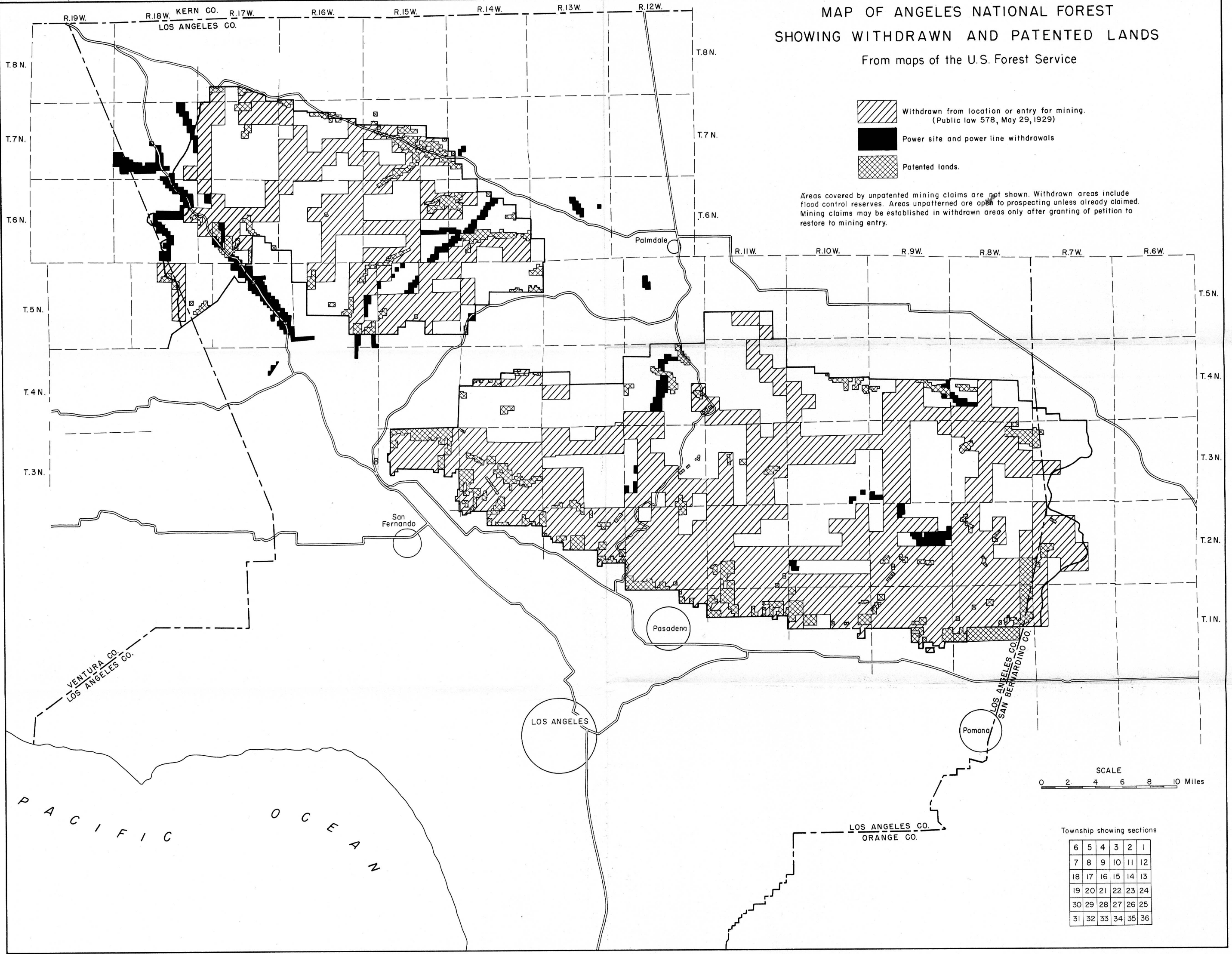
STATE OF CALIFORNIA
DEPARTMENT OF NATURAL RESOURCES

MAP OF ANGELES NATIONAL FOREST SHOWING WITHDRAWN AND PATENTED LANDS

From maps of the U.S. Forest Service

-  Withdrawn from location or entry for mining.
(Public law 578, May 29, 1929)
-  Power site and power line withdrawals
-  Patented lands.

Areas covered by unpatented mining claims are not shown. Withdrawn areas include flood control reserves. Areas unpatterned are open to prospecting unless already claimed. Mining claims may be established in withdrawn areas only after granting of petition to restore to mining entry.



Township showing sections

6	5	4	3	2	1
7	8	9	10	11	12
18	17	16	15	14	13
19	20	21	22	23	24
30	29	28	27	26	25
31	32	33	34	35	36