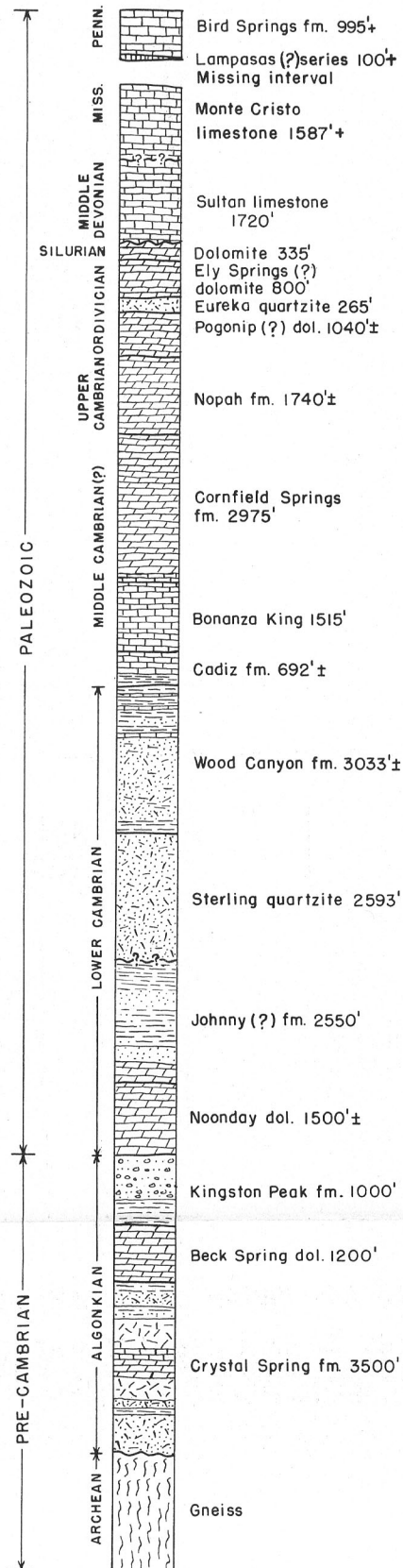
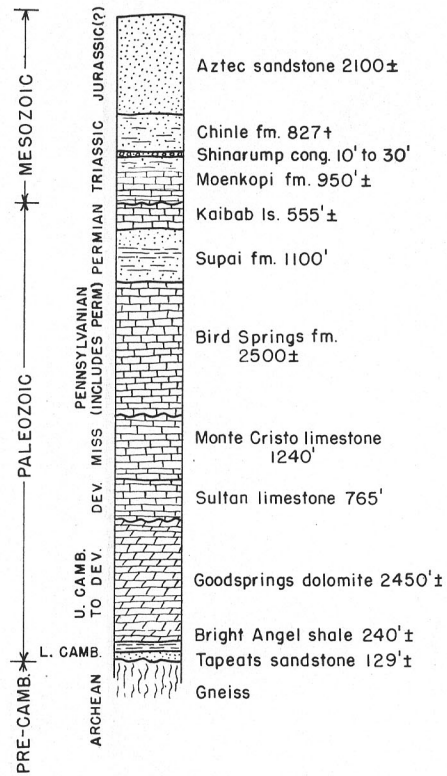


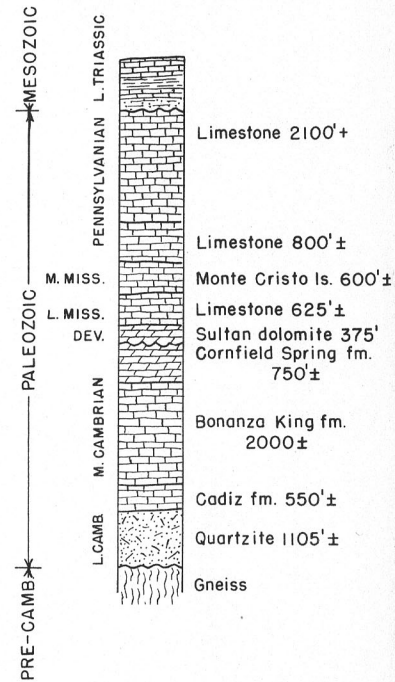
**NOPAH & RESTING SPRINGS
MOUNTAINS, CALIFORNIA**
(Paleozoic after J. C. Hazzard
1937 and 1951)



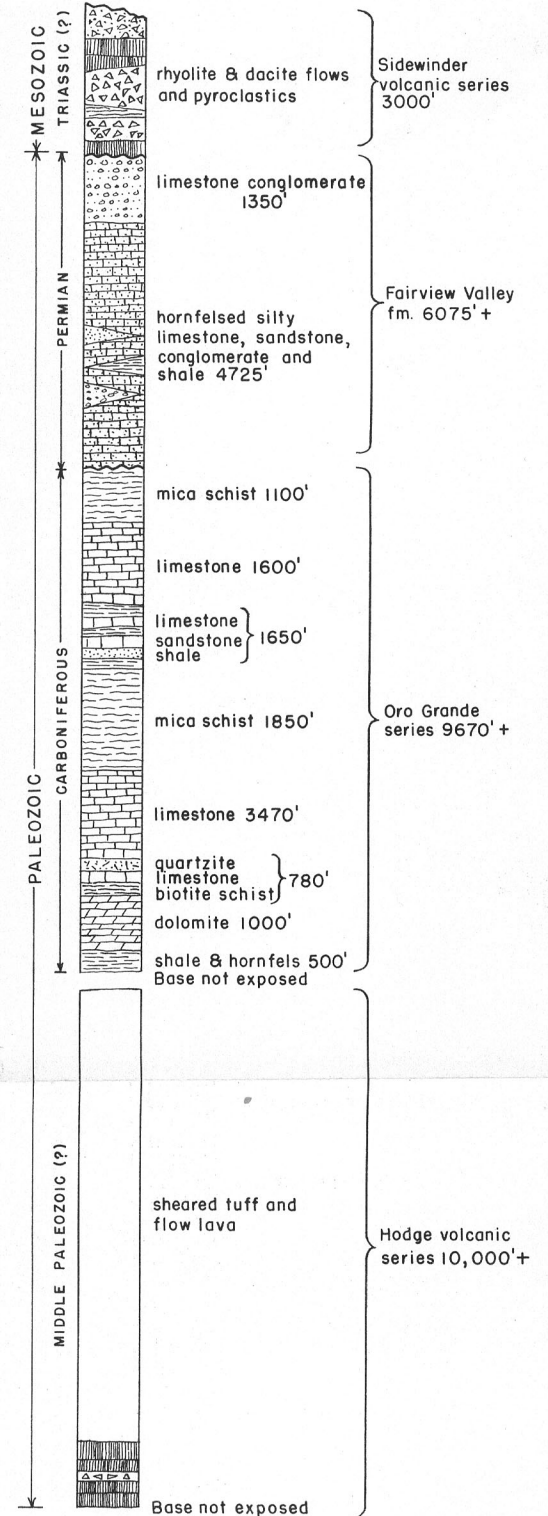
**GOODSPRINGS QUADRANGLE,
NEVADA**
(After D.F. Hewett, 1931. Similar
to section in northeastern San
Bernardino County)



**PROVIDENCE MOUNTAINS,
CALIFORNIA**
(After J.C. Hazzard, 1936)



**BARSTOW QUADRANGLE,
CALIFORNIA**
(After O. E. Bowen, 1952)



**GEOLOGIC COLUMNAR SECTIONS OF
PRE-TERTIARY STRATIFIED FORMATIONS IN
SAN BERNARDINO COUNTY**